



to

UNIS

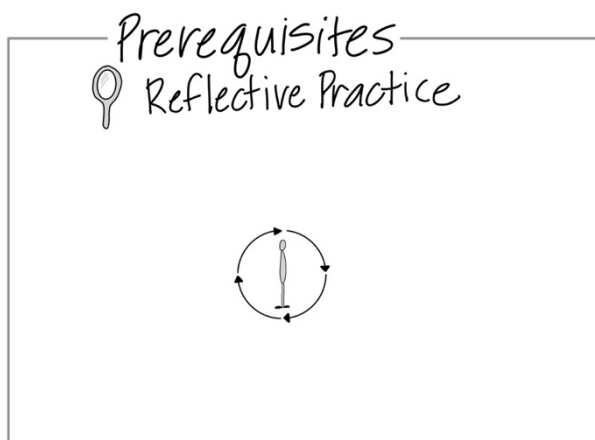
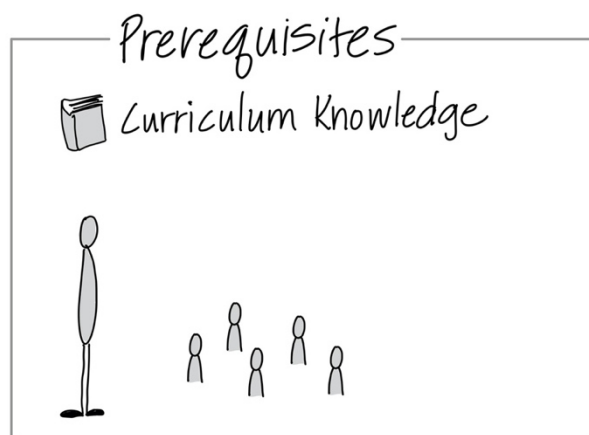
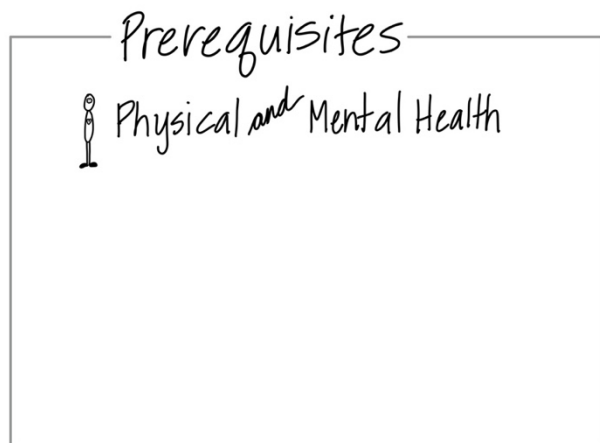
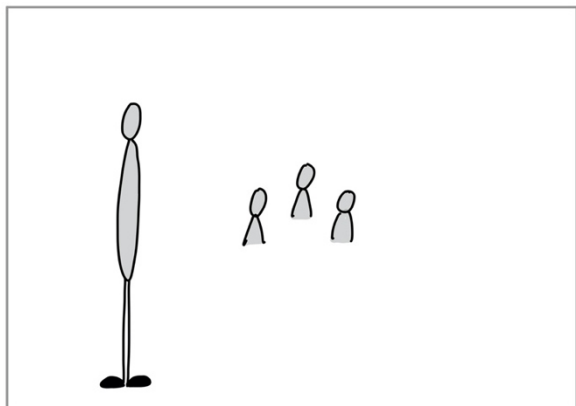
Creating Groups that
Understand, Nurture, Inspire, and Support
Each Other

Section 2: Foundations of Group Ecology

The Catalyst Approach was
Developed by Nancy Burns & Jacki Brickman

Prerequisites for the Leader

Section 2



Prerequisites for the Leader

Section 2



Pause and Reflect-

When you think of the Whole Group Classroom Leadership Foundational Skills, and your implementation under stress which strategies can you hold on to and which skills fall off?

Whole Group Classroom Leadership Strategies		
Whole Group Leadership Strategy	Hold onto	Temporarily Lose
Get Ready		
Get Set		
Get Noticed		
Wait & Watch		
Anchor with a Whisper		
Signal the Mode		
Monitor & Adjust		
Adapt the Directions		
Check for Understanding		
Set Stamina		
Lead & Empower		
Linger & Look Back		

In what ways are you creatively engaging students in curriculum?



UNIS creating groups that Understand, Nurture, Inspire and Support Each Other

Prerequisites for the Leader

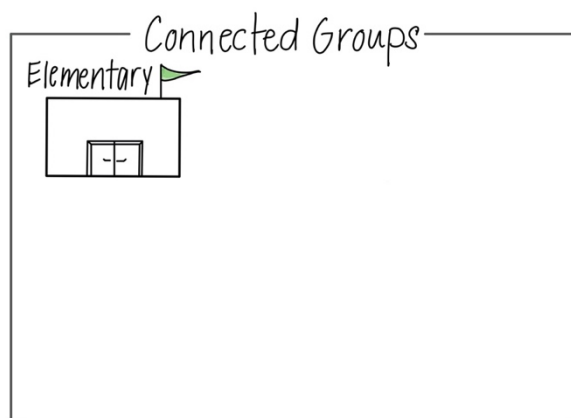
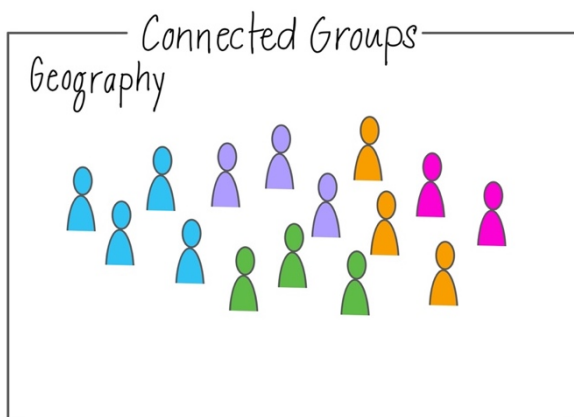
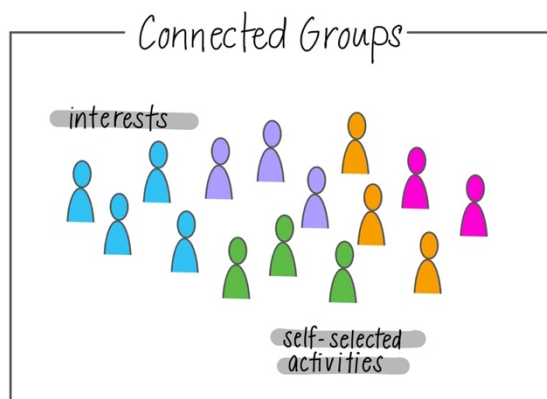
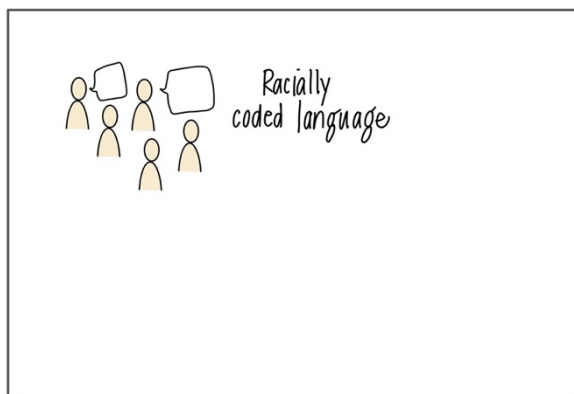
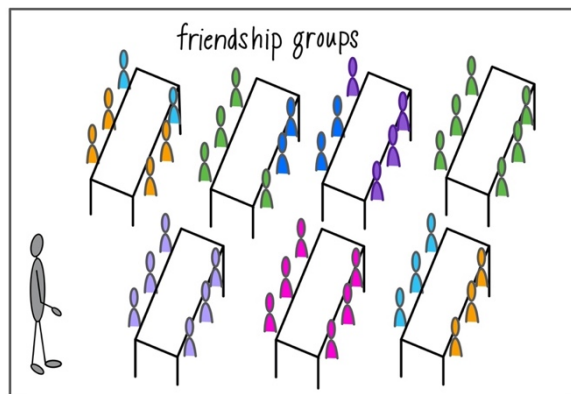
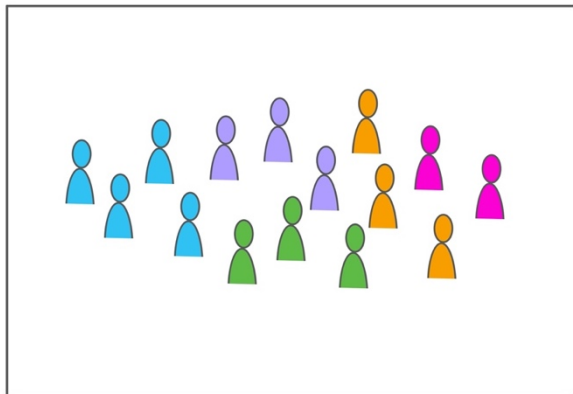
Section 2

What action steps do you plan to take in order to further your own practice, especially in regard to biases?

When you reflect on your own practice, do you tend to over-inflate or under-value?

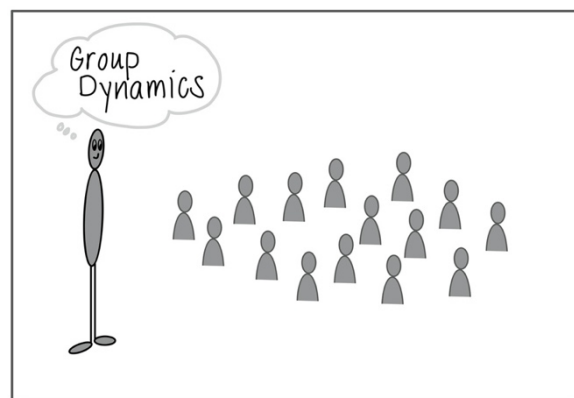
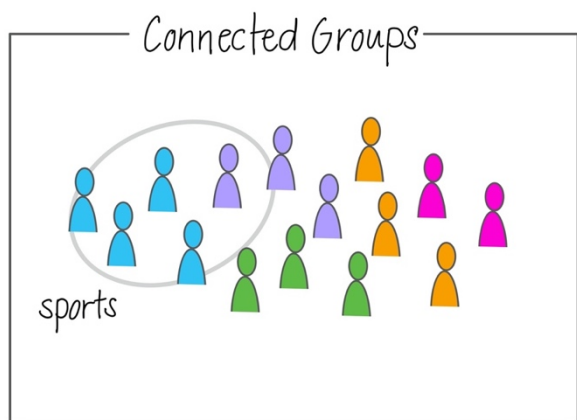
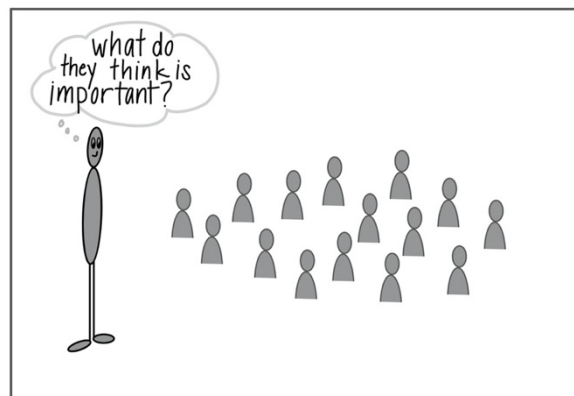
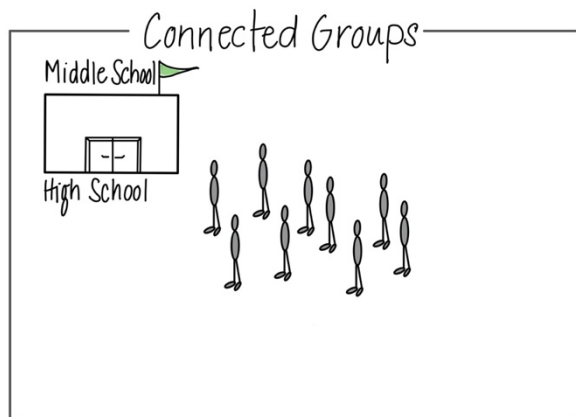
Connected Groups

Section 2



Connected Groups

Section 2



Connected Groups

Section 2



Pause and Reflect-

Think about the common connected groups that exist at your school for both adults and student?
List some of them below:

Which connected groups do you belong to?



Article notes- Modern High School Peer Crowd Hierarchy